



Tecumseh

Compressor
Voltage Code : KZ

FH2511Z-KZ

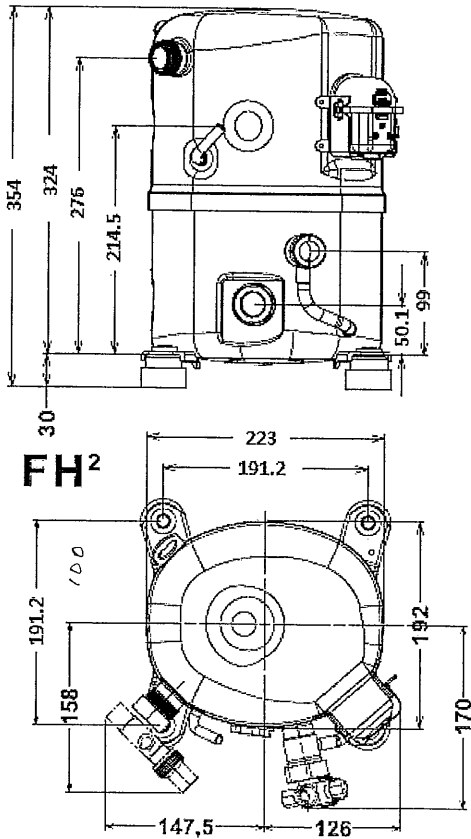
Low Temp. Commercial (BP)

220V 3~ 50Hz / 220V 3~ 60 Hz

R452A / R404A / R448A / R449A

FH2511Z-KZ1A

Conditions	Frequency	Nominal Cooling Capacity		Sound Power ISO3745 / ISO 3743-1
		Watts	BTU/h	
Standard TE / R452A	50 Hz / 60 Hz	3143 / 3644	10717 / 12425	74 dBA
Standard TE / R404A	50 Hz / 60 Hz	3566 / 4135	12161 / 14100	74 dBA
Standard TE / R448A	50 Hz / 60 Hz	2779 / 3221	9475 / 10985	74 dBA
Standard TE / R449A	50 Hz / 60 Hz	2787 / 3232	9504 / 11019	74 dBA



Displacement (cc)	68
Net Weight (Kg)	30.0
Oil Quantity (cc)	1140.0
Oil Type	Polyolester
Expansion Device	Capillary_Tube/Expansion_Valve
Cooling	Fan
Main Winding (Ohm)	1.3
Current	
RLA (A)	7.6 8
MCC (A)	16
LRA (A)	70
Electrical Equipment	TRI
Overload	Interne
Refrigerating connection for OD	
Suction Tube	15.9 (5/8")
Discharge Tube	12.7 (1/2")
Process Tube	6.35 (1/4")

* Standard TE : T°Cond. 54.5°C / T°Evap. -23.3°C / T°Return gas temp.. 32.0°C
T°Subcooling. 18.4K

Certificates :



Note : Tecumseh reserves the right to change information contained in this document without notification.



Tecumseh

FH2511Z-KZ

Tension KZ : 220V 3~ 50Hz / 220V 3~ 60 Hz

Les performances sont données dans les **conditions Standard TE** :
Condition Dew

Gaz aspirés : 32.0 °C
Sous refroidissement : 18.4 K

The performance data are in **Standard TE conditions** :
Dew Condition

Return gas : 32.0 °C
Subcooling : 18.4 K

50 Hz R449A (*)

N°User-60

4 T condensation	5 T évaporation	(°C)	-35	-30	-25	-20	-15	-10
30	1 P frigorifique	(Watt)	1853	2655	3644	4841	6270	7953
	2 P absorbée	(W)	1303	1558	1809	2049	2273	2475
	3 I absorbée	(A)	5.12	5.45	5.81	6.19	6.59	7.02
40	1 P frigorifique	(Watt)	1494	2279	3247	4423	5832	7502
	2 P absorbée	(W)	1249	1557	1869	2179	2481	2770
	3 I absorbée	(A)	5.01	5.47	5.95	6.45	6.98	7.53
50	1 P frigorifique	(Watt)	1066	1826	2765	3914	5300	6954
	2 P absorbée	(W)	1123	1485	1859	2239	2621	2997
	3 I absorbée	(A)	4.71	5.31	5.92	6.56	7.21	7.90
60	1 P frigorifique	(Watt)			2202	3318	4679	6321
	2 P absorbée	(W)			1770	2222	2684	3149
	3 I absorbée	(A)			5.71	6.48	7.28	8.09

60 Hz R449A (*)

N°User-60

4 T condensation	5 T évaporation	(°C)	-35	-30	-25	-20	-15	-10
30	1 P frigorifique	(Watt)	2148	3079	4225	5613	7269	9221
	2 P absorbée	(W)	1473	1761	2044	2316	2570	2798
	3 I absorbée	(A)	4.78	5.09	5.42	5.77	6.15	6.56
40	1 P frigorifique	(Watt)	1732	2642	3764	5128	6762	8698
	2 P absorbée	(W)	1412	1760	2113	2463	2805	3131
	3 I absorbée	(A)	4.68	5.10	5.55	6.02	6.52	7.03
50	1 P frigorifique	(Watt)	1236	2117	3206	4538	6145	8062
	2 P absorbée	(W)	1269	1678	2101	2531	2963	3388
	3 I absorbée	(A)	4.40	4.95	5.53	6.12	6.73	7.37
60	1 P frigorifique	(Watt)			2554	3847	5425	7328
	2 P absorbée	(W)			2001	2512	3034	3559
	3 I absorbée	(A)			5.32	6.05	6.79	7.55

1 = cooling capacity 2 = power input 3 = current 4 = condensing temperature 5 = evaporating temperature

(*) Veuillez vous référer strictement aux Recommandations d'Utilisation et Bulletins Marketing Tecumseh du fait de la température de refoulement élevée pour les applications LBP.

(*) Due to very high discharge temperature especially on LBP conditions, please strictly refer to Tecumseh Guidelines & Marketing Bulletin when using this refrigerant.

Nota : Tecumseh se réserve le droit de modifier les informations contenues dans ce document sans préavis.

Note : Tecumseh reserves the right to change information contained in this document without notification.

© 2021 Tecumseh Products Company
All rights reserved